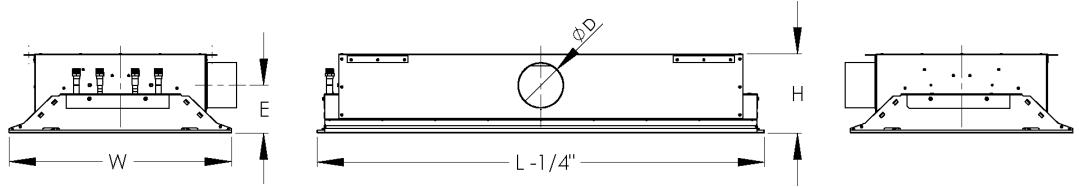


Side Inlet - Coil Mount Handings

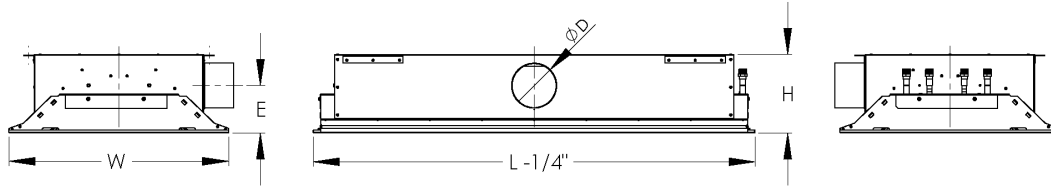
Left Coil Handing/
Pipes Left of Inlet

W = 23 3/4"

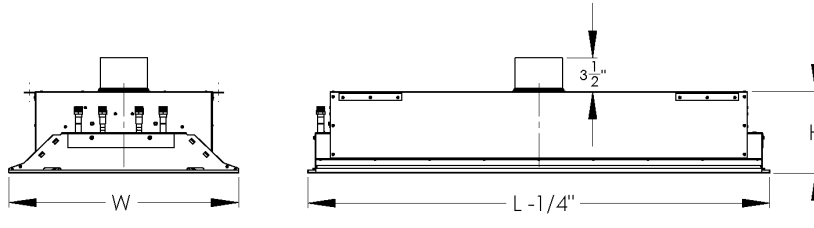


Right Coil Handing/
Pipes Right of Inlet

W = 23 3/4"

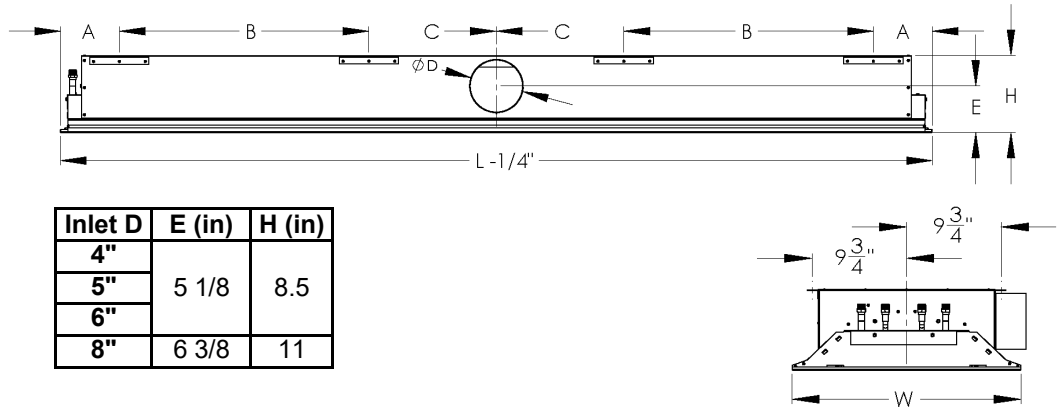


Top Inlet Casing is Universal



Fixed Bracket Mounting Locations

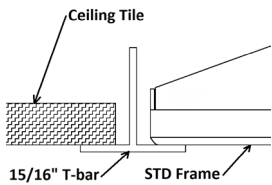
Beam Length	A (in)	B (in)	C (in)
2'	6 1/2	-	-
3'			
4'			
5'			
6'			
7'	23 3/8	12	
8'	27 3/8	14	



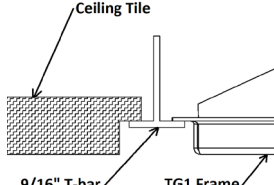
Inlet D	E (in)	H (in)
4"	5 1/8	8.5
5"		
6"		
8"		

Ceiling Grid T-Bar Border Style Options

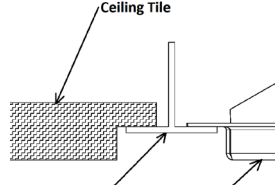
Standard (STD)



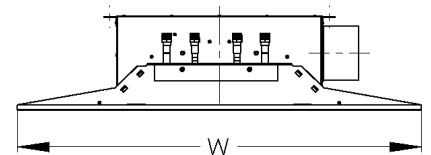
9/16" Tegular (TG1)



15/16" Tegular (TG2)



Exposed Mount Border



Length is Nominal L

W = 36"

Project: Carson Samples

Submittal Date: 6/22/2020

Location: Golden Valley, MN

Page 15