

# CUSTOM SOLUTIONS

The Carson Solutions flagship QLCI has helped deliver improved IAQ for thousands of classrooms throughout the US for nearly two decades. But did you know Carson Solutions has the flexibility and design capacity to help solve even the most unique challenges?

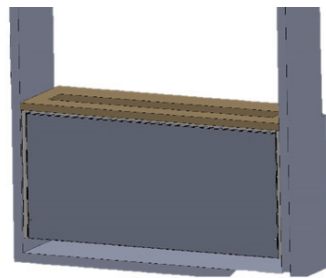
Manufactured with American ingenuity, Carson Solutions products are designed with quality materials. With innovation, sustainability, and quality are at our core, we offer the flexibility of a small company with agile manufacturing capabilities to customize all products. Partner with Carson Solutions to create your next solution!

## CONTACT US

952.525.2050

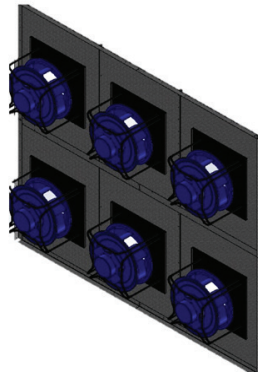
info@carsonsolutions.com

To learn more and to find your local representative, visit us at [carsonsolutions.com](http://carsonsolutions.com)



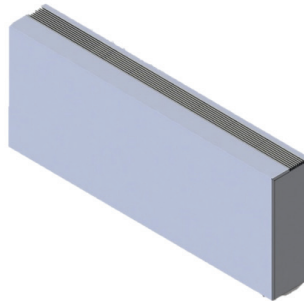
A custom front panel designed for a fan coil renovation project with strict dimensional tolerances between wall cavities in a high demanding dorm room environments.

- Improved tolerance control
- Increased metal thickness for improved structural integrity
- Unique fastener design for limited access potential



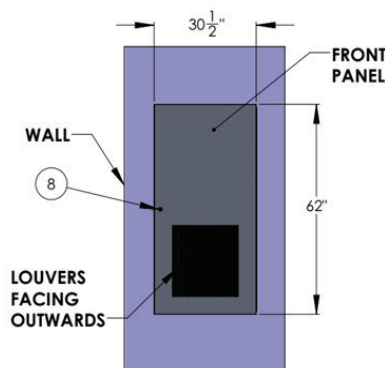
A custom designed fan bulkhead for an existing air handler going through a performance upgrade in a confined space.

- Ability to meet tight tolerance requirements for aging and non-traditional air handler aspect ratio
- Can accommodate a wide array of fan/motor configurations
- Can be sectionalized for ease of installation



A complete induction unit or fan coil enclosure with improved structural integrity beyond what often is standard for many manufacturers.

- Increased metal thickness for improved structural integrity
- Custom finish and color options to help meet architectural requirements



An improved ventilation terminal product access panel meeting the needs of several discerning customers for their upscale environments such as boutique hotels or casinos.

- Increased metal thickness for improved structural integrity
- Custom finish and color options to help meet architectural requirements
- Optional filtration configurations available
- Optional acoustical improvements available